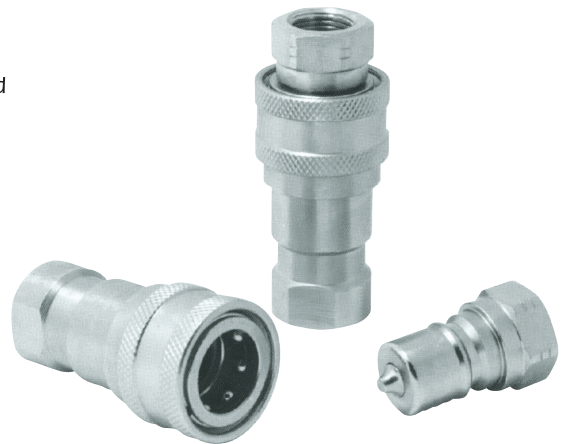


# Close Type Hydraulic Quick Coupling (Steel)

## ISO 7241B - npt

### Feature

- Poppet valves available to prevent uncoupled leakage.
- Poppet valves open automatically when coupled, with in rated working pressure, to keep the flow expedite.
- Critical parts are hardened for durability.
- Dependable ball-locking mechanism holds the mating halves together.
- Socket and plug are precisions machined from solid bar stock.
- Confirm to the standard of ISO 7241-B.
- Compatible with PARKER 60 Series, FASTER HNV Series, AEROQUIP FD45 Series and HANSEN HK Series.

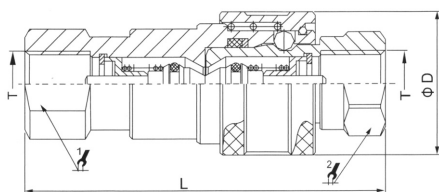
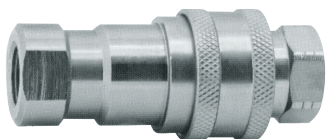


### Application

QRC are used across the spectrum of hydraulic applications. These Double Shut-Off couplings can be found any where that fluid transfer lines need to be connected and disconnected for operation or maintenance of equipment, and a loss of fluid is undesirable.

QRC are used in construction equipment, Forestry equipment, agricultural machinery, oil tools, Oil equipment, steel mill machinery, and other demanding hydraulic applications.

Body Sizes (in)	1/8	1/4	3/8	1/2	3/4	1
Rated Pressure (PSI)	5000	5000	4000	4000	4000	4000
Rated Flow (GPM)	1	3	6	12	28	50
Temperature Range (std seals)	-20°C to -120°C					
Standard seal material	NBR					



Code	ISO	L	ØD	1	2
QRC-B 04	6.3	72.0	28.5	19.0	19.0
QRC-B 06	10.0	80.5	35.0	22.0	24.0
QRC-B 08	12.5	93.5	44.5	27.0	28.5
QRC-B 12	20.0	112.5	54.0	34.0	36.0
QRC-B 16	25.0	126.5	63.5	41.0	41.0