



ARITA Scotch Yoke Pneumatic Rotary Actuator



**HIGH QUALITY
PNEUMATIC ACTUATOR**



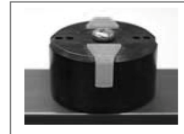


ARITA Scotch Yoke Pneumatic Rotary Actuator

- The Top Direction -
- A. Position Indicator
- B. Limit Switch Box
- C. Proximity Sensor
- D. E/P Positioner
- E. Position Transmitter
- F. Manual Lever



NAMUR Drive Shaft
(Hexagon or Double flat)



-Flat



-Dome

Position Indicator



Center Stopper Bolt (option)
Adjustment for open & close positions
0° - 95° Stopper

Cylinder
Extruded anodised aluminium

Mechanical Stopper

O-ring
Specially treated
for low friction

Mounting Holes for Accessories
Easier Mounting Acc. to
VDI/VDE 3845 NAMUR

Scotch Yoke
Hardened Scotch Yoke
power, compact unit

- The Front Direction -
- A. Solenoid Valve (NAMUR)
- B. Lock Up Valve
- C. Volume Booster
- D. Direct Fitting Assembler



Direct Mounting NAMUR

Polished surface finish
Low friction
max working life

Spring Pack
Pre-compressed for increased safety

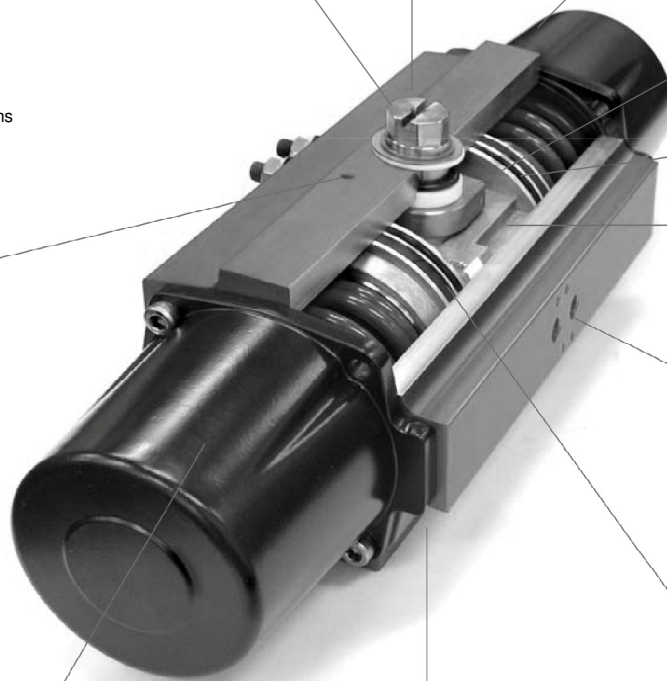
Mounting Holes
Acc. to International standard
ISO 5211, DIN 3337, NAMUR



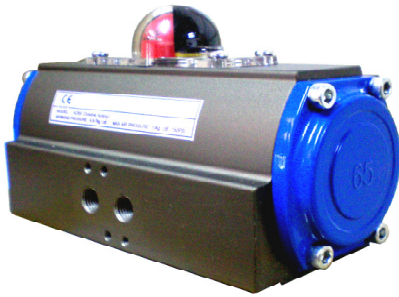
- The Bottom Direction -

- A. Valve Mounting
- B. Declutch Gear Box
- C. ISO 5211 DIN 3337
Square & Holes

Double square drive shaft
ISO 5211 NAMUR



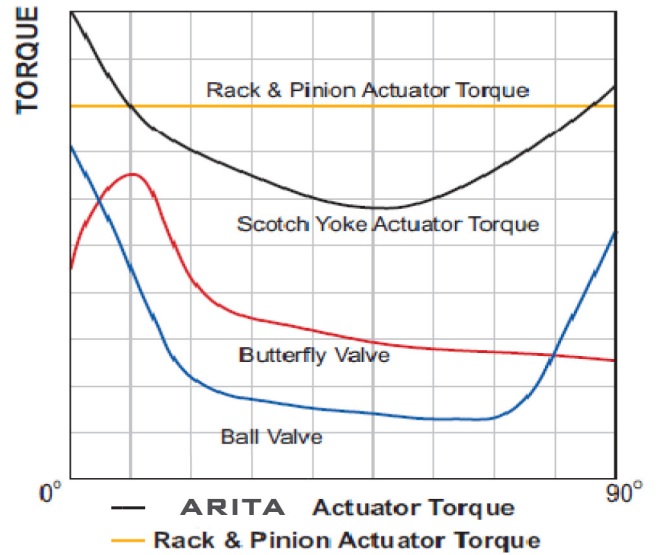
FEATURES AND ADVANTAGE



Advantage (Scotch Yoke)

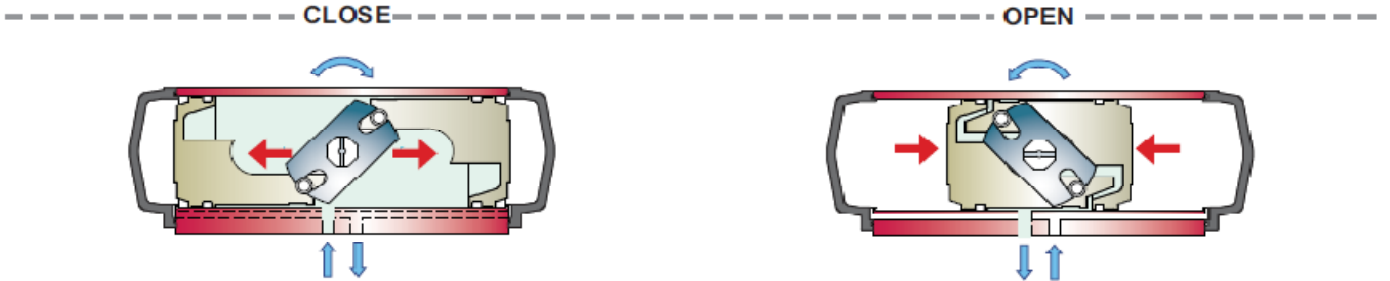
ARITA actuators provide increased torque at open and close position, this closely matches the required torque for practical valve operation.

- Increased torque at the open and close position
- Compact design and size
- Extremely long cycle life
- Adjustable center stopper for both open & close positions

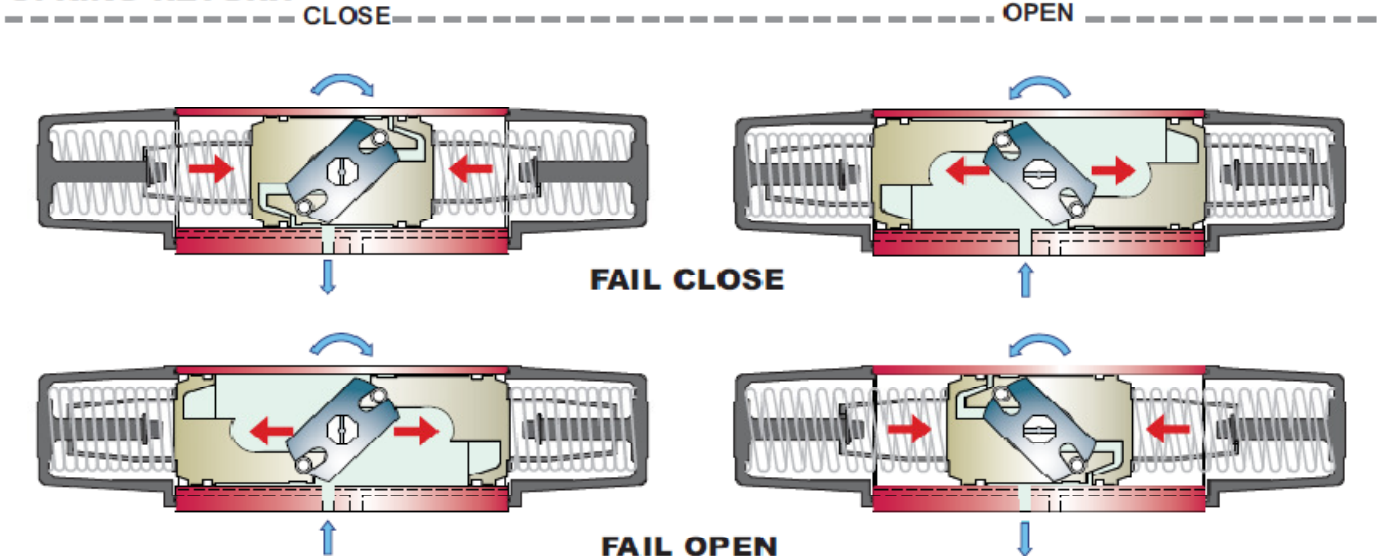


MECHANICAL MOVEMENT & POSITION INSIDE

DOUBLE ACTING



SPRING RETURN





ARITA Scotch Yoke Pneumatic Rotary Actuator

AD SERIES

ROTARY ACTUATOR / DOUBLE ACTING

Ball Valve, Butterfly Valve, Plug Valve, Damper Control



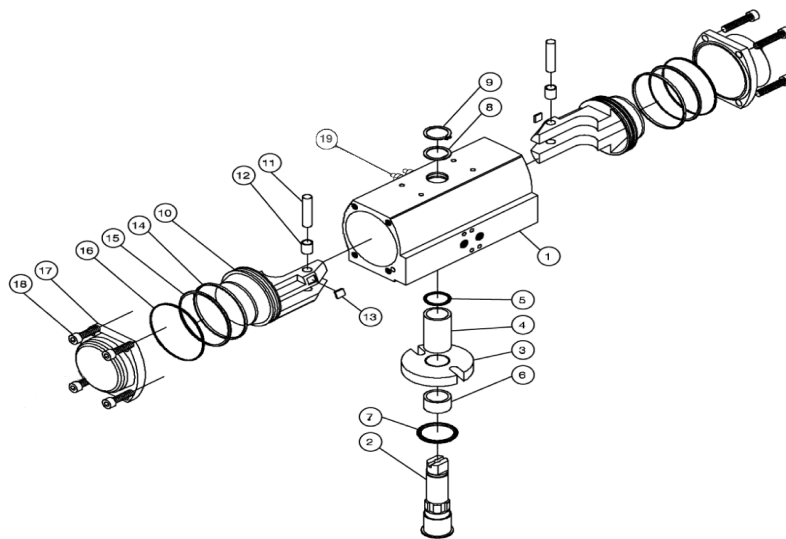
● Features

- Scotch - Yoke type
- No metal to metal touch
- I S O 5211. D I N 3337
- Anodized surface & double coated interior

● Specification

Item	AD40	AD50	AD65	AD80	AD100	AD125	AD140	AD160	AD200	AD250D	AD300D	AD400D	
Operating Type	R&P	Scotch - Yoke								Piston			
Operating Media	Compressed Dry Air												
Operating Pressure	4 ~ 7kg/cm ²												
Rotating Angle	90° ± 3°												
Operating Temperature	-10 ~ 60°C												
Weight (kg)	0.7	1.5	2.5	4	7	11	18	25	44.5	122	228	456	

● Part and Material



No.	Part Name	Materials	No.	Part Name	Materials
1	Body	Aluminum Alloy	12	Guide Bushing	Polyphithalamide
2	Drive Shaft	Steel Alloy (Nickel plated)	13	Dynamic Pad	Polyphithalamide
3	Crank	Steel Alloy (Nickel plated)	14	Piston Guide	Polyphithalamide
4	Bushing	Acetyl	15	O-ring (Guide)	NBR
5	O-Ring	NBR	16	O-ring (Cover)	NBR
6	Bushing	Acetyl	17	Cover	Aluminum Alloy
7	Washer	Polyphithalamide	18	Bolt	SCM435 Plating
8	Washer	Polyphithalamide	19	Adjust Bolt	Stainless Steel
9	C-Ring	Stainless Steel			
10	Piston	Aluminum Alloy			
11	Piston Pen	Steel Alloy (Nickel Plated)			



ARITA Scotch Yoke Pneumatic Rotary Actuator

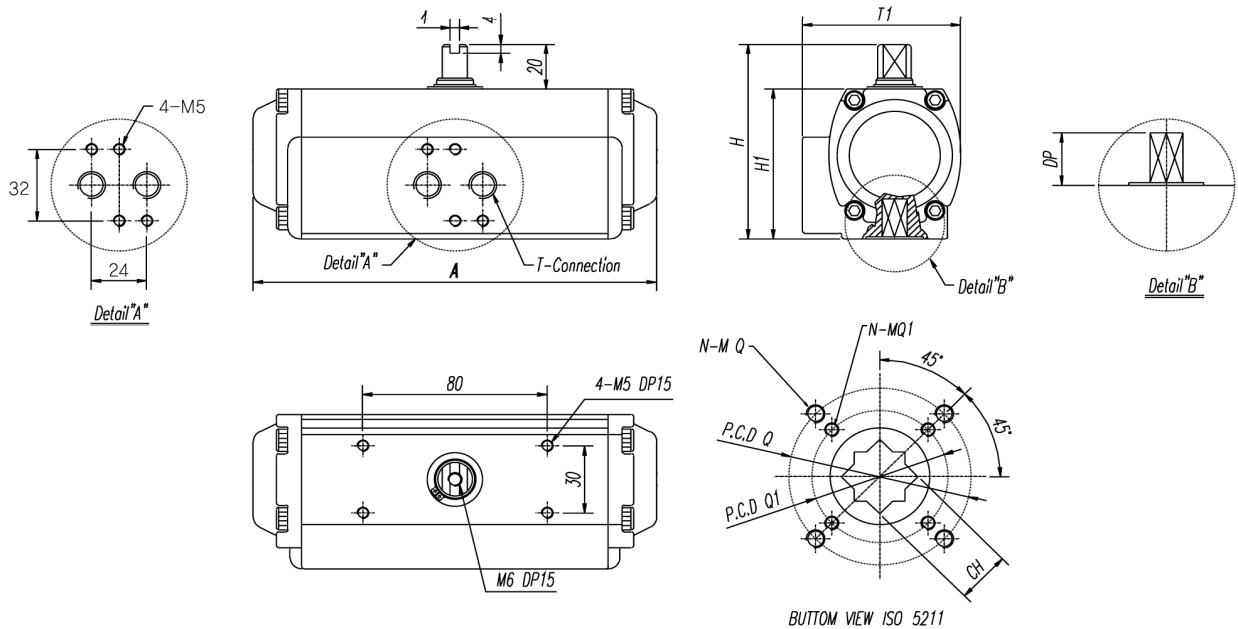
AD SERIES

ROTARY ACTUATOR / DOUBLE ACTING

● Torque Table (N-m)

Model	Angle	4bar	5bar	6bar	Model	Angle	4bar	5bar	6bar
AD40	0°	8	10	11	AD125	0°	551	678	794
	45°	8	10	11		45°	360	443	531
	90°	8	10	11		90°	491	613	732
AD50	0°	28	37	41	AD140	0°	754	923	1097
	45°	21	26	30		45°	455	582	668
	90°	38	40	52		90°	720	880	970
AD65	0°	78	95	116	AD160	0°	1062	1312	1600
	45°	49	63	73		45°	758	949	1133
	90°	71	93	107		90°	1320	1635	2027
AD80	0°	143	183	210	AD200	0°	2600	3200	4820
	45°	92	121	144		45°	1500	1950	2400
	90°	133	156	209		90°	2300	2900	3450
AD100	0°	247	292	368					
	45°	165	196	250					
	90°	237	301	363					

● Dimension



(mm)

Model	A	H	H1	DP	T1	P.C.D-Q1	H-Q1	P.C.D-Q	H-Q	CH	T	ISO
AD-40	108	74	54	12	60	36	4-M5	50	4-M6	9 x 9	1/8	F03/F05
AD-50	158	90	70	13	72	36	4-M5	50	4-M6	11 x 11	1/4	F03/F05
AD-65	202	106	87	17	89	50	4-M6	70	4-M8	14 x 14	1/4	F05/07
AD-80	262	126	99	19	101	70	4-M8	-	-	17 x 17	1/4	F07
AD100	334	143	123	26	114	70	4-M8	102	4-M10	22 x 22	1/4	F07/10
AD125	414	164	144	26	136	70	4-M8	102	4-M10	22 x 22	1/4	F07/10
AD140	456	180	160	30	158	102	4-M10	125	4-M12	27 x 27	1/4	F10/13
AD160	540	210	190	30	178	140	4-M16	-	-	36 x 36	1/4	F14
AD200	640	281	261	60	230	165	4-M20	-	-	46 x 46	1/4	F16



ARITA Scotch Yoke Pneumatic Rotary Actuator

AS SERIES

ROTARY ACTUATOR / DOUBLE ACTING

Ball Valve, Butterfly Valve, Plug Valve, Damper Control



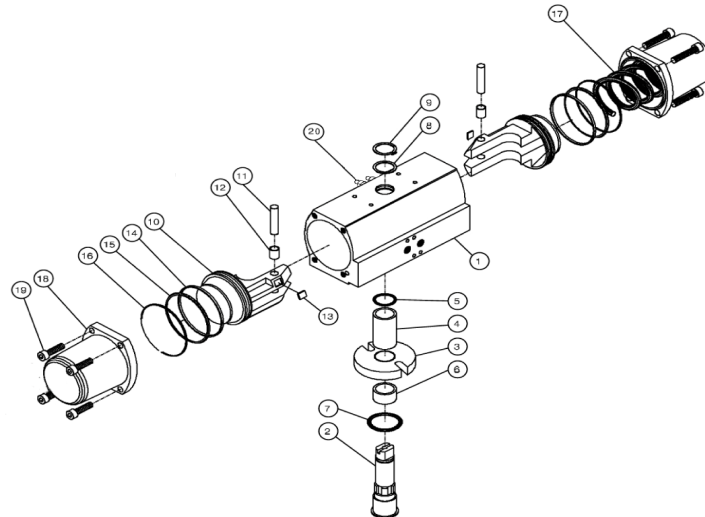
● Features

- Scotch - Yoke type
- No metal to metal touch
- I S O 5211. D I N 3337
- Anodized surface & double coated interior

● Specification

Item	AS40	AS50	AS65	AS80	AS100	AS125	AS140	AS160	AS200	AS250D	AS300D	AS400D	AS500D
Operating Type	R & P	Scotch - Yoke								Piston			
Operating Media	Compressed Dry Air												
Operating Pressure	4 ~ 7kg/cm ²												
Rotating Angle	90° ± 3°												
Operating Temperature	-10 ~ 60 °C												
Weight (kg)	0.7	1.5	2.5	4	7	11	18	25	44.5	122	228	456	680

● Part and Material



No.	Part Name	Materials	No.	Part Name	Materials
1	Body	Aluminum Alloy	12	Guide Bushing	Polyphithalamide
2	Drive Shaft	Steel Alloy (Nickel plated)	13	Dynamic Pad	Polyphithalamide
3	Crank	Steel Alloy (Nickel plated)	14	Piston Guide	Polyphithalamide
4	Bushing	Acetyl	15	O-ring (Guide)	NBR
5	O-Ring	NBR	16	O-ring (Cover)	NBR
6	Bushing	Acetyl	17	Spring	SUPG
7	Washer	Polyphithalamide	18	Cover	Aluminium Alloy
8	Washer	Polyphithalamide	19	Bolt	SCM435 Plating
9	C-Ring	Stainless Steel	20	Adjust Bolt	Stainless Steel
10	Piston	Aluminum Alloy			
11	Piston Pen	Steel Alloy (Nickel Plated)			



ARITA Scotch Yoke Pneumatic Rotary Actuator

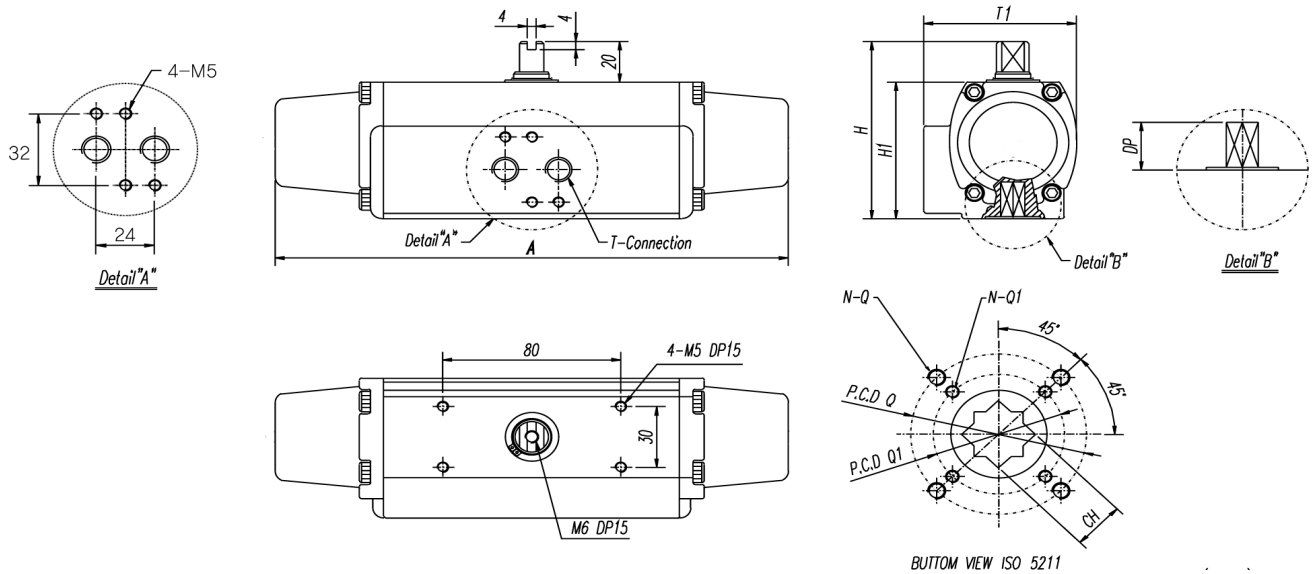
AS SERIES

ROTARY ACTUATOR / DOUBLE ACTING

● Torque Table (N-m)

Model	Angle	Spring Torque 2 ~ 3kgf/cm ² G		Model	Angle	Spring Torque 2 ~ 3kgf/cm ² G	
		Spring to	Air to 4.5			Spring to	Air to 4.5
AS40	0°	4	6	AS125	0°	230	380
	45°	3	3		45°	190	190
	90°	6	4		90°	280	230
AS50	0°	14	26	AS140	0°	300	550
	45°	12	12		45°	290	290
	90°	26	14		90°	550	300
AS65	0°	35	54	AS160	0°	550	750
	45°	23	28		45°	420	420
	90°	54	35		90°	750	550
AS80	0°	60	100	AS200	0°	1050	1620
	45°	50	50		45°	940	940
	90°	100	60		90°	1620	1050
AD100	0°	100	190				
	45°	80	80				
	90°	190	100				

● Dimension



(mm)

Model	A	H	H1	DP	T1	P.C.D-Q1	H-Q1	P.C.D-Q	H-Q	CH	T	ISO
AS-40	108	74	54	12	60	36	4-M5	50	4-M6	9 x 9	1/8	F03
AS-50	256	90	70	13	72	36	4-M5	50	4-M6	11 x 11	1/4	F05
AS-65	314	106	87	17	89	50	4-M6	70	4-M8	14 x 14	1/4	F05/07
AS-80	430	126	99	19	101	70	4-M8	-	-	17 x 17	1/4	F07
AS100	486	143	123	26	114	70	4-M8	102	4-M10	22 x 22	1/4	F07/10
AS125	597	164	144	26	136	70	4-M8	102	4-M10	22 x 22	1/4	F07/10
AS140	700	180	160	30	158	102	4-M10	125	4-M12	27 x 27	1/4	F10/13
AS160	790	210	190	30	178	140	4-M16	-	-	36 x 36	1/4	F14
AS200	960	281	261	60	230	165	4-M20	-	-	46 x 46	1/4	F16



ARITA Scotch Yoke Pneumatic Rotary Actuator

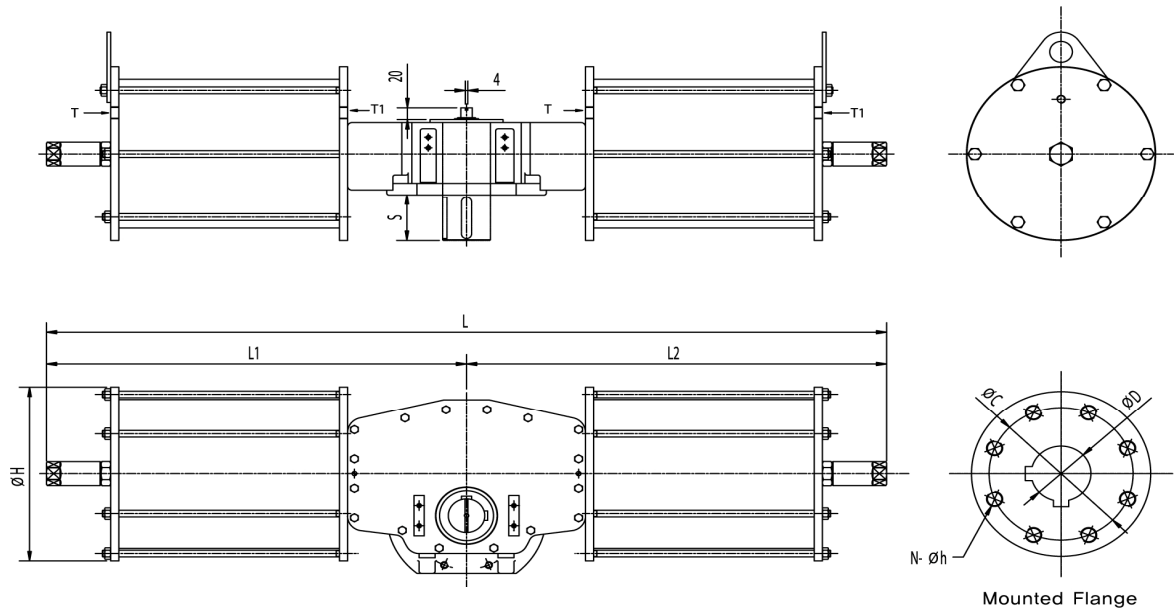
HEAVY DUTY - DOUBLE ACTING

ROTARY ACTUATOR / DOUBLE ACTING

● Torque Table (N-m)

Model	Angle	4Bar	5Bar	6Bar
AD250D	0°	4,200	5,200	6,300
	45°	3,100	3,800	4,600
	90°	4,200	5,200	6,300
AD300D	0°	7,600	9,500	11,000
	45°	6,500	8,000	9,700
	90°	7,600	9,500	11,000
AD400D	0°	10,780	12,597	15,117
	45°	7,126	8,908	10,689
	90°	9,574	11,967	14,361
AD500D	0°	18,966	23,708	28,449
	45°	13,411	16,764	20,117
	90°	18,018	22,522	27,027

● Dimension



Model	ØH	L1	L2	L	ØD	S	N-m	KEY	T	P.C.D- ØC
AD250D	280	445	445	890	Ø55	60	4-M20	16 x 20	PT 3/8"	165
AD300D	370	725	725	1450	Ø70	60	8-M16	20 x 12	PT 3/8"	254
AD400D	460	800	800	1600	Ø90	-	8-M20	25 x 14	PT 3/4"	298
AD500D	560	1080	1080	2160	Ø120	-	8-M30	32 x 18	PT 3/4"	356



ARITA Scotch Yoke Pneumatic Rotary Actuator

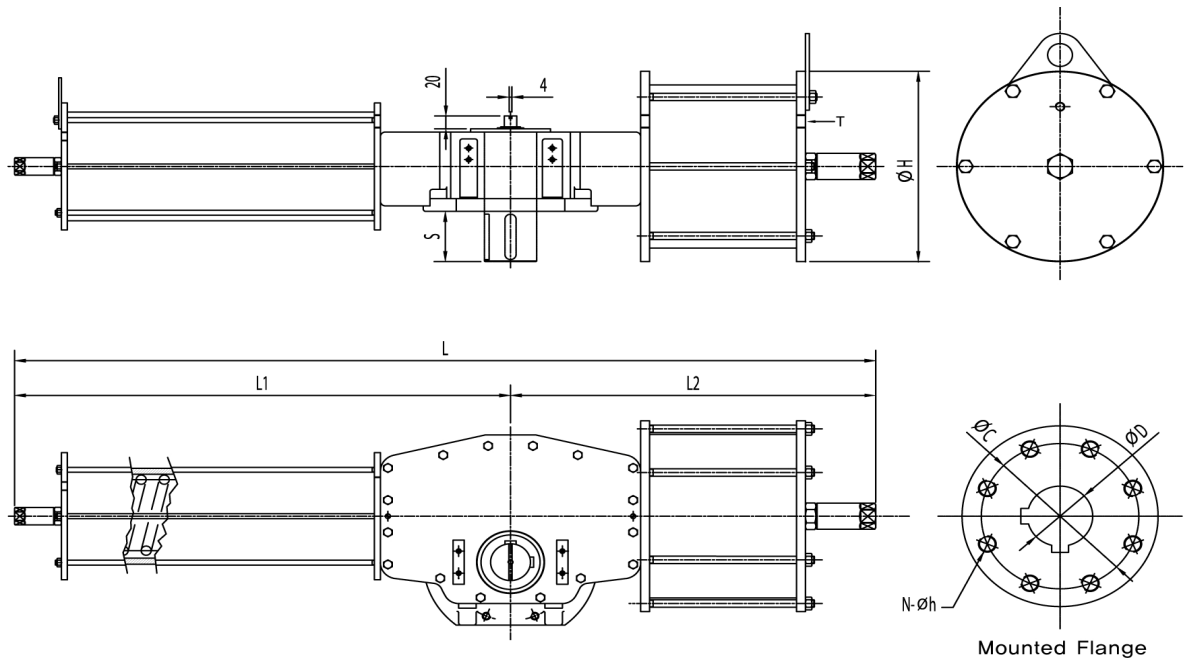
HEAVY DUTY - SINGLE ACTING

ROTARY ACTUATOR / DOUBLE ACTING

● Torque Table (N-m)

Model	Angle	4.5Bar	5Bar	6Bar	Spring
AS250D	0°	1,620	2,023	2,827	2,000
	45°	1,106	1,509	2,313	2,514
	90°	578	981	1,785	3,042
AS300D	0°	2,873	3,591	5,028	3,591
	45°	1,976	2,694	4,131	4,488
	90°	1,030	1,751	3,188	5,413
AS400D	0°	5,605	7,015	9,817	7,025
	45°	4,630	6,040	8,842	8,000
	90°	2,020	3,430	6,232	10,610

● Dimension



Model	ØH	L1	L2	L	ØD	S	N-m	KEY	T	P.C.D- Ø
AS250D	280	770	770	1540	Ø55	60	4-M20	16 x 20	PT 3/8"	165
AS300D	370	1100	725	1825	Ø70	60	8-M16	20 x 12	PT 3/8"	254
AS400D	460	1200	800	2000	Ø90	-	8-M20	25 x 14	PT 3/4"	298



ARITA Scotch Yoke Pneumatic Rotary Actuator

TECHNICAL DATA

ROTARY ACTUATOR / DOUBLE ACTING

● Air Consumption

The air consumption of actuator is calculated by below.

The air consumption is based on 1 action of used valve and do calculate the consumption per an hour.

■ Spring Return Actuator (AS Series)

$$V = B \times N$$

■ Spring Return Heavy Duty Actuator

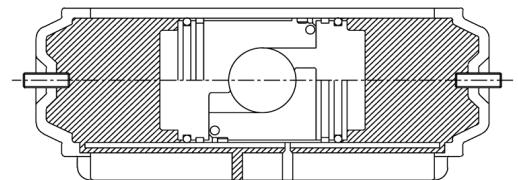
$$V = B1 \times N$$

■ Double Acting Actuator (AD Series)

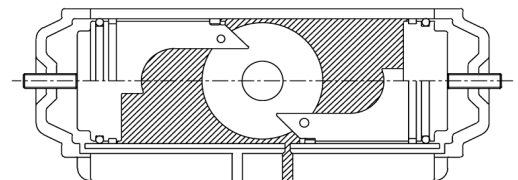
$$V = (B + A) \times N$$

V = Air Consumption (Liter)
 A = Volume "A"
 B = Volume "B"
 N = Number of Operating

Actuator Model		Actuator Volume		
		A	B	B1
AD40	AS40	0.07	0.06	
AD50	AS50	0.13	0.11	
AD65	AS65	0.25	0.24	
AD80	AS80	0.54	0.48	
AD100	AS100	0.97	0.86	
AD125	AS125	1.47	1.28	
AD140	AS140	1.74	1.45	
AD160	AS160	4.76	3.6	
AD200	AS200	5.62	4.83	
AD250D	AS250D	6.50	6.50	4.20
AD300D	AS300D	13.0	13.0	8.40
AD400D	AS400D	23.0	23.0	14.90



Volume "A"



Volume "B"

ELECTRIC ACTUATOR

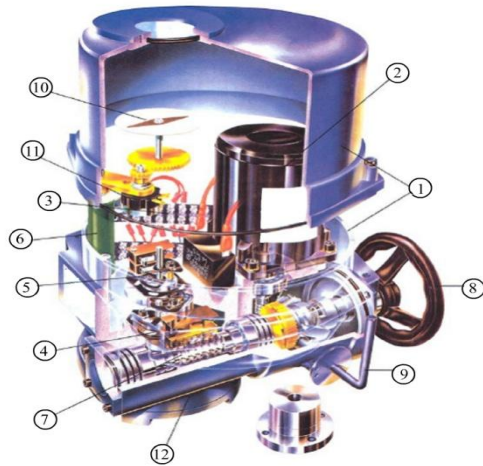
Quarter-turn (QT Model)



UNIMECH INSTRUMENTS & CONTROL SDN. BHD

50, LENGKOK KAPAL, TAMAN INDUSTRI CHAIN FERRY, 12100 BUTTERWORTH, PENANG.

CONSTRUCTION



FEATURES

1. ENCLOSURE

Standard enclosure fulfilled protection class IP 67, NEMA 4 & 6. (Explosion proof version is available.)

2. MOTOR

Squirrel cage motor is of encapsulated type, with high stall torque and low inherent force for seating & unseating of valves. All motor are integrated with build-in thermal protection.

3. TERMINAL CONNECTION & WIRING

Terminal connection is of "WAGO" push on type, making wiring connection very easy & without fuss. Electric wiring circuit is standardized for single & three phase voltage. Additional terminal is available on request.

4. LIMIT SWITCHES

A pair of limit switches are activated by means of simple, reliable & adjustable cam plates, mounted directly onto, and driven by center column. The unique cam plate design does not allow over travel of limit switches.

5. TORQUE SWITCHES

Electric actuators with torque more than 100 Nm, are installed with torque switches for over-load protection

6. HEATER

For prevention of condensation due to weather & temperature changes, and also keeps internal components clean & dry. A 20 watt space heater is provided inside all the electric actuator.

7. SELF LOCKING MECHANISM

Because of the worm gear design system, all the electric actuators are self locking.

8. HANDWHEEL

Correct size of hand - wheel on the electric actuator ensure adequate strength for safe and efficient emergency operation.

9. MANUAL OVER-RIDE

Engage by pulling the lever & turning the hand-wheel. Lever is auto declutch when power supply is switched on, and hand-wheel does not turn as extra safety feature.

10. VISUAL POSITION INDICATOR

The visual position indicator is directly mounted onto the center drive column to provide the visual position of the valve.

11. POTENTIOMETER – (OPTIONAL)

Is available on request, is to provide & transmit remote indication of valve position.

12. MOUNTING & ADAPTOR

Bottom flange mounting dimension conform to ISO 5211. A adaptor drive bushing is provided for every electric actuator, is removable and for machining to suite valve stem size.

Quarter-turn Electric Actuators (QT Model)



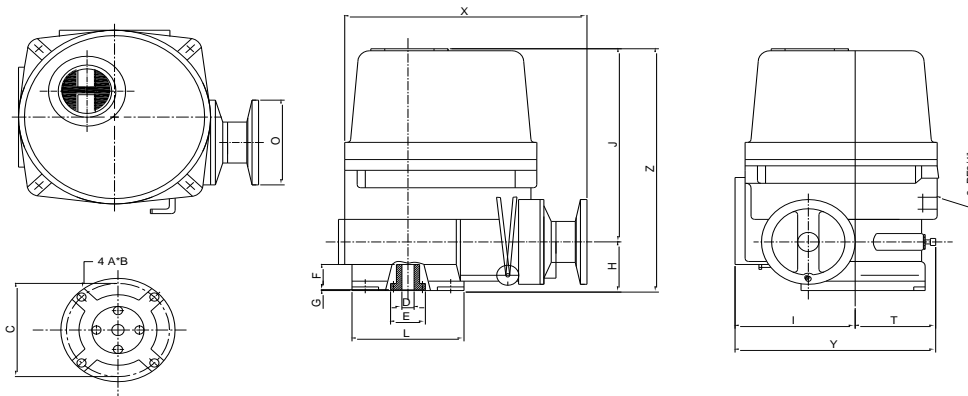
PERFORMANCE

Type	Model	Max Output Torque	Operating Time 60/50Hz	Max Stem Dia.	Motor Class	230Vac Single-Phase Current of Motor (A)		Capacitor uF/450V	Number of handle Turn 90Deg	Weight (Kgs)
		N-m	30 Deg.	mm	F	Rated	Locked rotor			
QT1*	QT-03	30	11/13	14	8	0.3	0.48	2.5	7	8
	QT-04	40	11/13	14	10	0.3	0.48	2.5	7	8
	QT-06	60	13/16	22	15	0.58	0.67	4	8.5	11
	QT-09	90	13/16	22	25	0.65	0.75	4	8.5	12
QT2	QT-15	150	17/20	22	40	0.95	1.05	7	12.5	15
	QT-19	190	17/20	22	40	0.95	1.05	7	12.5	15
QT3	QT-28	280	20/24	32	40	0.95	1.5	7	10	19
	QT-38	380	20/24	32	60	1.4	1.75	10	10	20
	QT-50	500	20/24	32	90	1.8	1.9	12	10	21
QT4	QT-60	600	24/29	42	90	1.8	3	12	14.5	24
	QT-80	800	24/29	42	180	2.2	3.5	20	14.5	25
	QT-100	1000	24/29	42	200	2.4	3.8	20	14.5	28

STANDARD SPECIFICATION

Housing & Cover	Aluminium Alloy, Anodized	Travel Angle	90° ± 5°
Enclosure	Watertight IP67, Nema 4 and 6	Indicator	Continuous Position Indicator
Ambient Temp	~30° to 70°C, 150 C/1hr	Manual Override	HAND/AUTO Decoupling Mechanism
Power Supply (60Hz/50Hz)	230VAC, 1Phase Option - 110VAC, 1Phase 220/380/440VAC, 3 Phase	Self Locking	Provide by means of Worm Gearing
		End Stopper	External Adjustable Screws
Control Power	230VAC, 1Phase, 60/50Hz	Space Heater	20W for Anti-Condensation
Torque Switches	2 x SPDT for QT 15 and above	Conduit Entries	Two PF3/4"
Limit Switches	2 X SPDT 15 A.	Lubrication	Grease NLGI Grade 2 (EP Type)
Stall Protection	Built-in Thermal Protection OPEN 120°C ± 5°/Close 77°C ± 15°C	Materials	Steel, Aluminium Alloy, Al Bronze
		External Coating	Dry Powder, Epoxy-Polyester Munsell No.FJ-002

DIMENSION



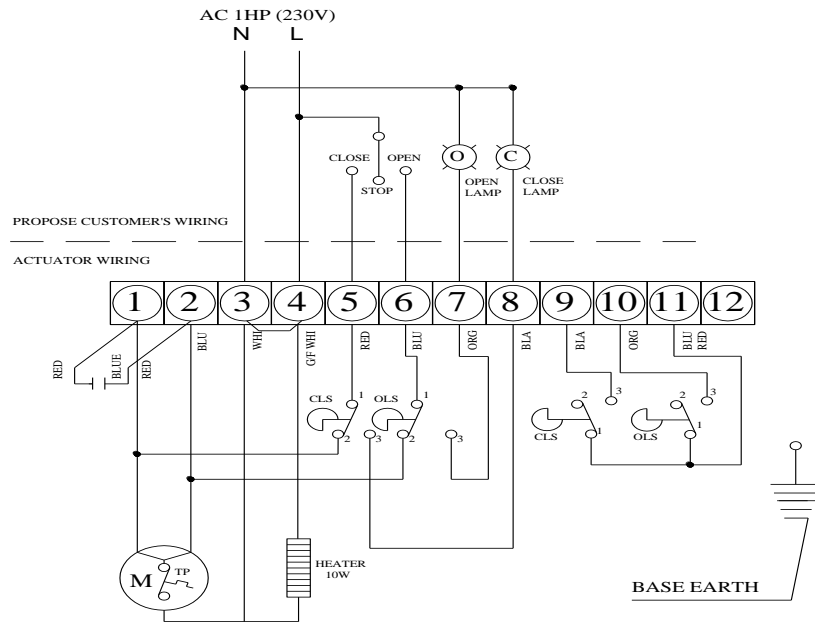
Type	QT3	QT4	QT6	QT9	QT15	QT19	QT28	QT38	QT50	QT60	QT80	QT100
ISO 5211	F05/ F07	F05/ F07	F05/ F07	F05/ F07	F07	F07	F10/ F12	F10/ F12	F10/ F12	F10/ F14	F10/ F14	F10/ F14
C	50	50	50/ 70	70	70	70	102/ 125	102/ 125	102/ 125	102/ 140	102/ 140	102/ 140
A	M6	M6	M6/ M8	M8	M8	M8	M10/ M12	M10/ M12	M10/ M12	M10/ M16	M10/ M16	M10/ M16
B	14	14	14/16	16	14	14	17/19	17/19	17/19	15/24	15/24	15/24
D (Max)	14	14	14	22	22	22	32	32	32	42	42	42
E	40	40	40	54	57	57	75	75	75	85	85	85
F	25	25	25	35	35	35	42	42	42	50	50	50
G	5	5	5	5	5	5	1.5	1.5	1.5	1.5	1.5	1.5
H	60	60	60	60	65	65	70	70	70	78	78	78
I	125	125	125	125	150	150	180	180	180	191	191	191
J	196	196	196	196	198	198	231	231	231	265	265	265
L	102	102	102	102	125	125	145	145	145	175	175	175
O	200	200	200	200	200	200	250	250	250	250	250	250
T	75	75	75	75	90	90	100	100	100	116	116	116
X	240	240	240	240	260	260	285	285	285	325	325	325
Y	200	200	200	200	240	240	280	280	280	307	307	307
Z	256	256	256	256	263	263	301	301	301	343	343	343

Quarter-turn Electric Actuators (QT Model)

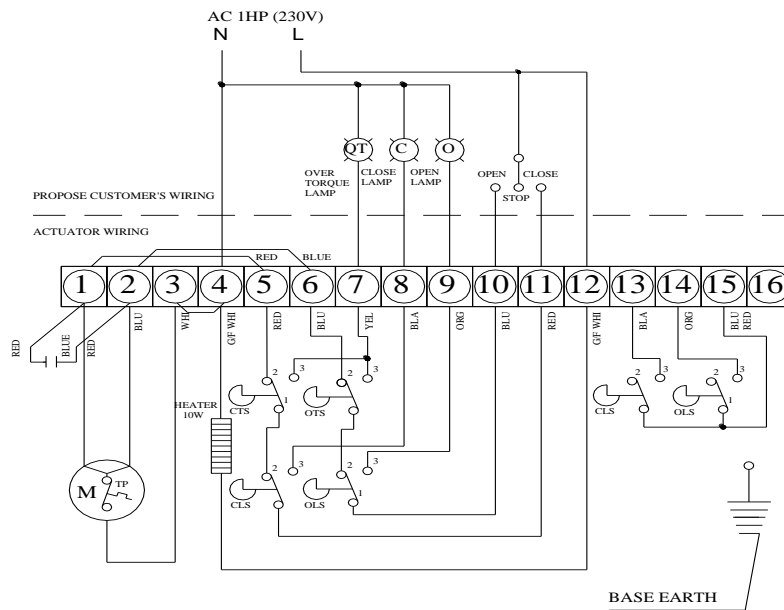


CIRCUIT DIAGRAM (WIRING)

QT3 ~ QT9



QT15 ~ QT100



Any enquires, please contact :
 Unimech Instruments & Control Sdn Bhd.
 50, Lengkok Kapal, Taman Industry Chain Ferry,
 12100 Butterworth, Penang, Malaysia.
 Tel : 604-3248788, 3330393
 Fax : 604-3249788
 Email : UIC_Sdn Bhd@yahoo.com

UIC ELECTRIC ACTUATOR



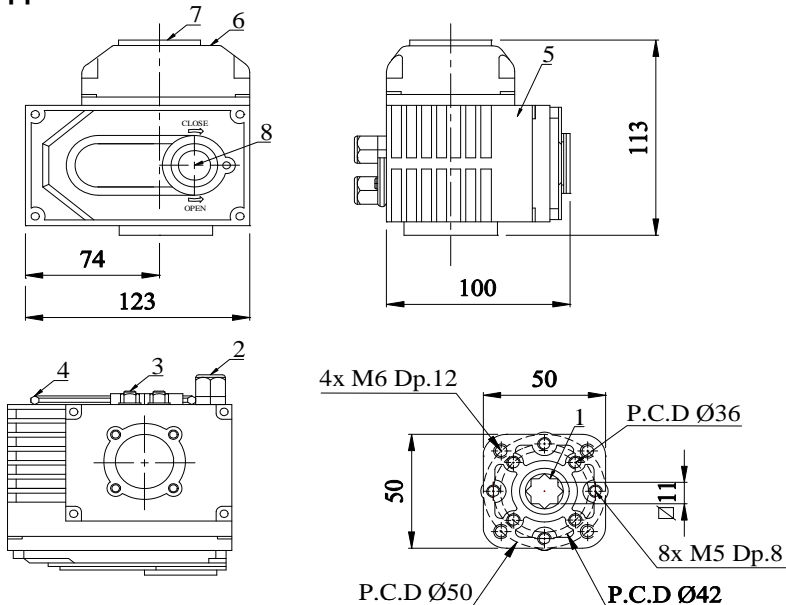
"UIC" series electric actuator is used for controlling 90° rotation of the valves and other similar products, such as Butterfly Valve, Ball Valve, Damper, Cock Valve and etc. It is widely applies to water treatment, paper mill, Air Ventilation, Filtration System, light industry and etc.

Model	Max Torque (N.M)	Operating Time 90° (s)	Motor (W)	Rated Current (single phase 230Vac 50Hz)	Weight (Kg)
UIC-003	30	10	8	0.27	2.1

Specification

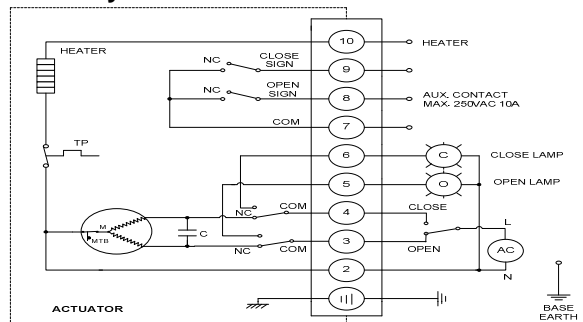
Shell	Aluminium alloy Shell, Enclosure IP68, NEMA4 and 6
Power	Standard: 230Vac Single phase (± 10%), Option : 110Vac Single Phase, 24Vdc
Motor	Squirrel-cage Asynchronous Motor
Limit Switch	2 X Open/Close, SPDT, 250Vac 10A
Auxiliary Limit Switch	2 X Open/Close, SPDT, 250Vac 10A
Stroke	90° ± 10°
Stall Protection	Internal-placed thermal protection
Indicator	Continuous situation indication
Manual operation	Mechanical handle with alley key
Self-locking device	Self-locking by worm gear
Mechanical Limit	2 external adjustable screws
Space Heater	7 ~ 10 W (220Vac) Anti-condensation
Conduit entries	2 X M18
Ambient temperature	-20° C ~ +70° C
Lubrication	Grease Molybdenum (EP type)
Material	Steel, Aluminium alloy, Aluminium bronze, Polycarbonate
Ambient humidity	max 90% RH
Anti-vibration	X Y Z 10g, 0.2~34 Hz, 30 minutes
External coating	Dry powder, Epoxy polyester

Appearance View and Dimension



- 1 Output axis
- 2 Cable Gland
- 3 Mechanical limit
- 4 Alley key
- 5 Actuator Shell
- 6 Wiring Cover
- 7 Sight glass
- 8 Anti-dust cover

Circuitry



*All dimension in unit mm

*all technical specification are without obligation.

ELECTRIC ACTUATOR



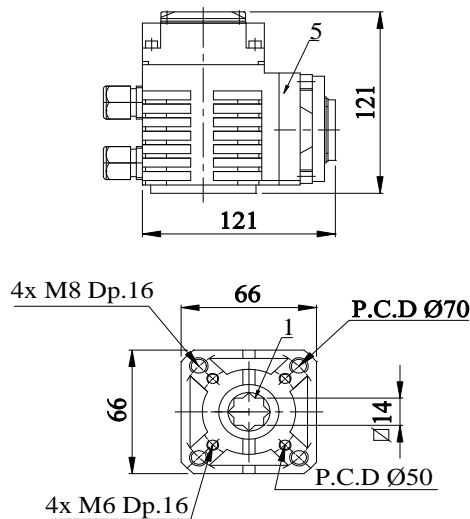
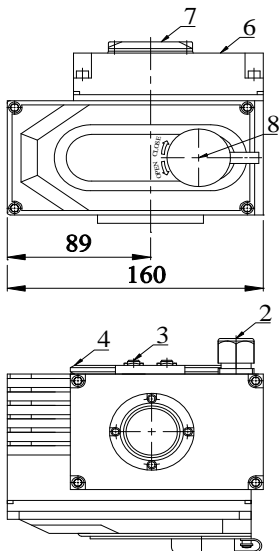
"UIC" series electric actuator is used for controlling 90° rotation of the valves and other similar products, such as Butterfly Valve, Ball Valve, Damper, Cock Valve and etc. It is widely applies to water treatment, paper mill, Air Ventilation, Filtration System, light industry and etc.

Model	Max Torque (N.M)	Operating Time 90° (s)	Motor (W)	Rated Current (single phase 230Vac 50Hz)	Weight (Kg)
UIC-005	50	26	10	0.25	3.6

Specification

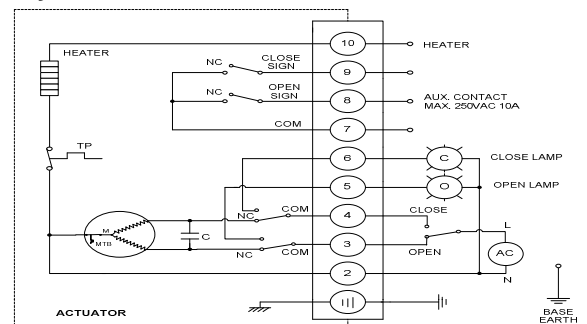
Shell	Aluminium alloy Shell, Enclosure IP68, NEMA4 and 6
Power	Standard: 230Vac Single phase (± 10%), Option : 110Vac Single Phase, 24Vdc
Motor	Squirrel-cage Asynchronous Motor
Limit Switch	2 X Open/Close, SPDT, 250Vac 10A
Auxiliary Limit Switch	2 X Open/Close, SPDT, 250Vac 10A
Stroke	90° ± 10°
Stall Protection	Internal-placed thermal protection
Indicator	Continuous situation indication
Manual operation	Mechanical handle with alley key
Self-locking device	Self-locking by worm gear
Mechanical Limit	2 external adjustable screws
Space Heater	7 ~ 10 W (220Vac) Anti-condensation
Conduit entries	2 X M18
Ambient temperature	-20° C ~ +70° C
Lubrication	Grease Molybdenum (EP type)
Material	Steel, Aluminium alloy, Aluminium bronze, Polycarbonate
Ambient humidity	max 90% RH
Anti-vibration	X Y Z 10g, 0.2~34 Hz, 30 minutes
External coating	Dry powder, Epoxy polyester

Appearance View and Dimension



- 1 Output axis
- 2 Cable Gland
- 3 Mechanical limit
- 4 Alley key
- 5 Actuator Shell
- 6 Wiring Cover
- 7 Sight glass
- 8 Anti-dust cover

Circuitry



*All dimension in unit mm

*all technical specification are without obligation.



UNIMECH INSTRUMENTS & CONTROL SDN. BHD.

(641861-M)



UNIMECH INSTRUMENTS & CONTROL SDN. BHD. (641861-M)

Add : 50 Lengkok Kapal, Taman Industry Chain Ferry,
12100 Butterworth, Penang, Malaysia.

Tel : +604 - 3248788, 3330393

Fax : +604 - 3249787

Email : sales@myuic.com.my

Website : www.myuic.com.my

UQT Electric Actuator



PRODUCT SUMMARY

"UQT" series electric actuator is used for controlling 0° ~ 270° rotation of the valves and other similar products, such as butterfly valve, ball valve, damper, flapper valve, cock valve etc. It widely applies to petroleum, chemical, water treatment, shipping, paper making, power plant, heating, light industry and other industries. Driven by 380V/200V/110VAC power or 24V/110VDC power, input 4-20mA or 0-10DC control signal, moves valve to the right position, and achieves to automatic control, maximum output torque is 5000N.M.

PERFORMANCE PARAMETER

Model	Max Output Torque	Operating Time 60/50Hz	Max Drive Shaft Size	F-class Motor	Rated Current (A)				Handwheel Revolution	Weight
					Single Phase		Three Phases			
	N-M	90° (S)	mm	W	110V	220V	380V	440V	N	(kg)
UQT-005	50	18/22	φ20	20	1.10/0.95	0.55/0.54	0.3/0.3	N/A	10	7.5
UQT-008	80	18/22	φ20	20	1.10/0.95	0.55/0.54	0.3/0.3	N/A	10	7.5
UQT-010	100	18/22	φ20	20	1.10/0.95	0.55/0.54	0.3/0.3	N/A	10	7.5
UQT-015	150	21/25	φ22	40	1.65/1.67	0.88/0.84	0.31/0.31	0.30/0.31	11	17.3
UQT-020	200	21/25	φ22	40	1.67/1.67	0.89/0.85	0.31/0.31	0.30/0.31	11	17.3
UQT-030	300	26/31	φ35	90	1.85/1.86	0.92/0.92	0.35/0.35	0.34/0.34	13.5	22
UQT-050	500	26/31	φ35	90	3.60/3.62	1.55/1.58	0.59/0.59	0.58/0.58	13.5	23
UQT-060	600	26/31	φ35	120	3.65/3.62	1.60/2.20	0.60/0.59	0.59/0.58	13.5	23
UQT-080	800	31/37	φ45	180	4.10/4.10	2.15/2.20	0.85/0.85	0.79/0.79	16.5	29
UQT-120	1200	31/37	φ45	180	4.20/4.10	2.35/2.30	0.87/0.87	0.81/0.81	16.5	29
UQT-150	1500	78/93	φ45	180	4.20/4.10	2.15/2.20	0.85/0.85	0.79/0.79	49.5	83
UQT-200	2000	93/112	φ45	180	4.10/4.10	2.15/2.20	0.85/0.85	0.79/0.79	49.5	83
UQT-300	3000	93/112	φ45	180	4.20/4.10	2.35/2.30	0.87/0.87	0.81/0.81	49.5	83
UQT-400	4000	155/185	φ45	180	4.20/4.10	2.35/2.30	0.87/0.87	0.81/0.81	82.5	83
UQT-500	5000	155/185	φ45	180	4.20/4.10	2.35/2.30	0.87/0.87	0.81/0.81	82.5	83

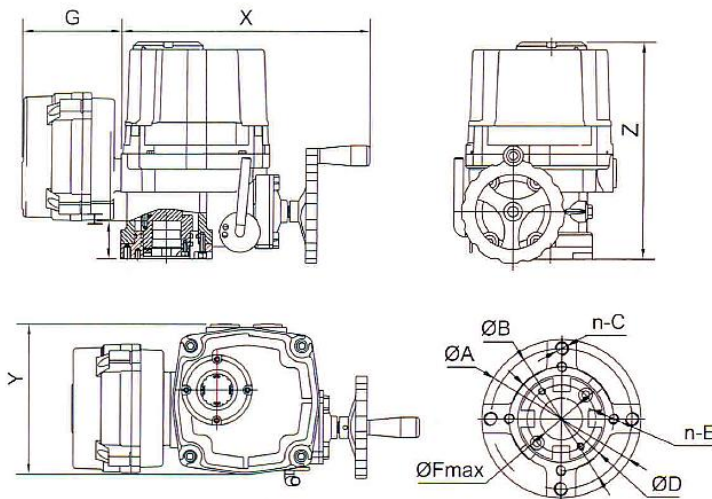
TECHNICAL PARAMETER

Shell	Enclosure: IP67, NEMA4, Exd II CT5	
Power	Standard : 220VAC/1ph Optional : 110VAC/1ph, 380V/ 440V/ 3ph, 50/60HZ, ±10% 24VDC/110VDC/220VDC	
Motor	Asynchronous motor	
Limit switch	2 x Open/ Close, SPDT, 250VAC 10A	
Auxiliary limit switch	2 x Open/ Close, SPDT, 250VAC 10A	
Torque switch	Close/ Open, each 1, SPDT, 250VAC 10A	Except UQT-005, 008, 010
Travel	90° ±10°	0° ~ 270°
Fail safe/ Operating temperature	Internal-placed thermal protection, Open 115°C ±5°C/ Close 97°C ±5°C	
Indicator	Continuous position indicator	
Manual operate	Declutching mechanism, operate by handwheel	
Self-locking device	Self-locking by worm and worm gear	
Mechanical limit	2 x external adjustable stopper	
Space heater	7-10W (110V/220VAC)	
Conduit entry	2 x PF 3/4"	
Ambient temperature	-20°C ~+70°C	
Lubrication	Grease moly (EP type)	
Material	Steel, Aluminium alloy, Aluminium bronze, Polycarbonate	
Ambient humidity	Max 90% RH	Non-Condensing
Anti-vibration	X Y Z 10g, 0.2~34 Hz, 30 minutes	
External coating	Dry powder, Epoxy polyester, high anti-corrosion	

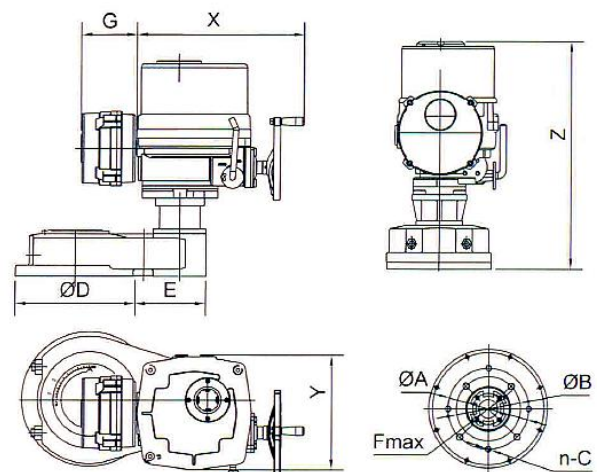
GENERAL DRAWING



UQT-005 UQT-080



UQT-120 UQT-500



Model	X	Y	Z	A	B	N-C	D	N-E	F	G	H
UQT-005	270	161	233.5	φ90	φ70	4-M8	/	/	φ20	140	40
UQT-008	270	161	233.5	φ90	φ70	4-M8	/	/	φ20	140	40
UQT-010	270	161	233.5	φ90	φ70	4-M8	/	/	φ20	140	40
UQT-015	351	226	270	φ125	φ102	4-M10	φ70	4-M8	φ22	140	45
UQT-020	351	226	270	φ125	φ102	4-M10	φ70	4-M8	φ22	140	45
UQT-030	358	240	290	φ150	φ125	8-M12	φ102	4-M10	φ35	140	55
UQT-050	358	240	290	φ150	φ125	8-M12	φ102	4-M10	φ35	140	55
UQT-060	410	240	290	φ150	φ125	8-M12	φ102	4-M10	φ35	140	55
UQT-080	410	276	335	φ180	φ140	8-M16	φ125	4-M12	φ45	140	65
UQT-120	410	276	335	φ180	φ140	8-M16	φ125	4-M12	φ45	140	65
UQT-150	410	276	335	φ165	φ140	8-M16	φ285	147	φ45	/	/
UQT-200	410	276	335	φ165	φ140	4-M16-M20	φ285	147	φ45	/	/
UQT-300	410	276	335	φ165	φ140	4-M16-M20	φ285	147	φ45	/	/
UQT-400	410	276	335	φ165	φ140	4-M16-M20	φ285	147	φ45	/	/
UQT-500	410	276	335	φ165	φ140	4-M16-M20	φ285	147	φ45	/	/

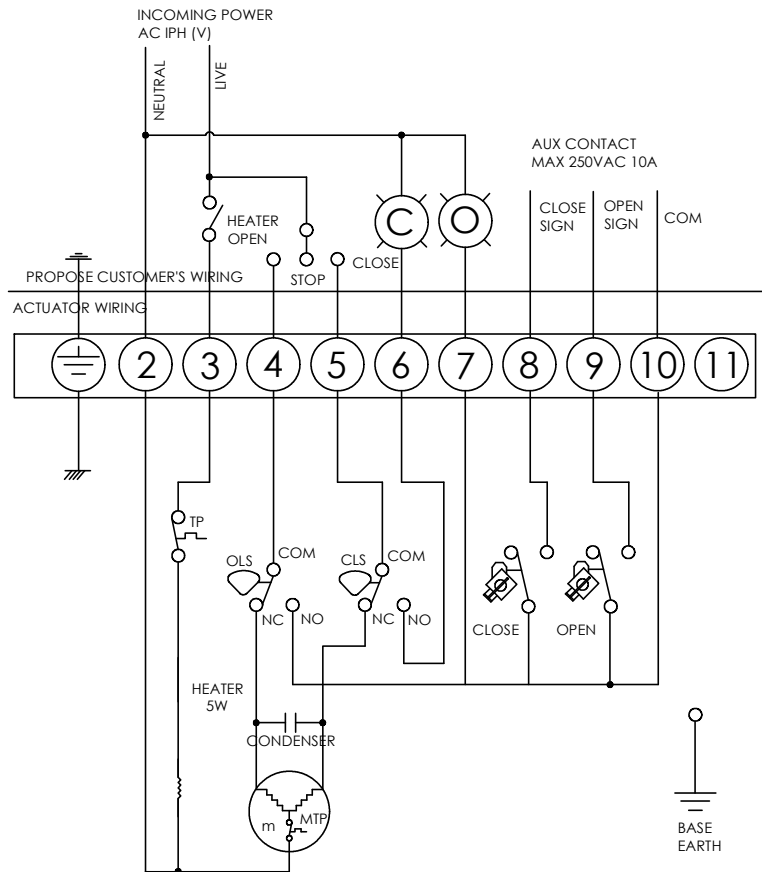
OPTION SPECIFICATION

No.	Option Scheme	Remarks
1	Explosion-proof actuator (Exd II CT5)	UQT Series
2	Water-proof actuator (IP68, 10M, 250HR)	UQT Series
3	Potentiometer unit (1K-10K)	UQT Series
4	Proportion control unit (control signal 4-20mA DC/1-5V/1-10V)	UQT Series
5	Local control units (local control open/ stop/ close optional switch, local/ remote switch)	UQT Series
6	Travel 120°, 180°, 270°	UQT Series
7	Direct current motor (24VDC)	UQT Series
8	Torque switch (SPDT x 2 250VAC 10A)	Except UQT-005, 008, 010
9	Electric current position transfer (output 4-20mA DC)	UQT Series
10	Self-reset when power failure	UQT Series
11	High temperature resistance actuator (-10°C ~ +100°C)	UQT Series
12	Low temperature resistance actuator (-40°C ~ +70°C)	UQT Series
13	Low speed actuator	UQT Series

*data is subjected to change without prior notice due to continual improvement.



1. UQT-005~010, 110/220VAC, 50/60HZ, 1PH(on/off function)



2. UQT-015~500, 110/220VAC, 50/60HZ, 1PH (on/off function)

