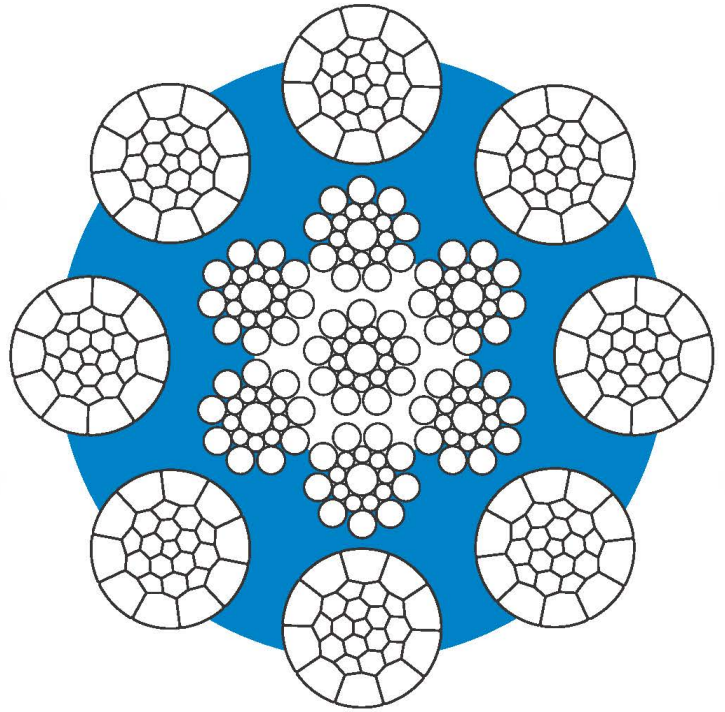


Hyfil K8

- Non-Rotation Resistant Rope
- Should not be used with a Swivel
- Zinc Coated / Alumar Coated / Bright
- Compacted
- Steel Plastic Combination



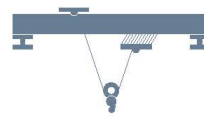
CRAWLER CRANE



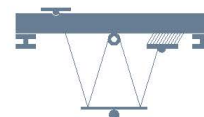
TOWER CRANE



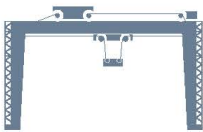
PILEDIVING EQUIPMENT



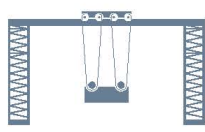
OVERHEAD TRAVELING CRANE



LADLE CRANE



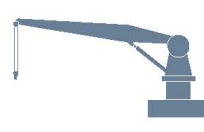
GANTRY CRANE



RTGC / RMGC



MOBILE HARBOUR CRANE



DECK CRANE



OFFSHORE CRANE

Technical Data

Diameter Range (mm)	Average Fill Factor	Average Spin Factor			Average Weight Factor	Lay Direction
		1770	1960	2160		
8-60	0.659	0.889	0.888	0.847	0.886	Regular Lay Lang's Lay

Diameter range (mm)	Total number of load-bearing wires in the outer layer of strands	Discard criteria (Number of broken wires)					
		Single layer drum & Steel sheaves				Multi-layer drum	
		Classes M1 to M4					
		Ordinary Lay		Lang's Lay		Ordinary & Lang's Lay	
		6xd	30xd	6xd	30xd	6xd	30xd
8-42	208	9	18	4	9	18	36
43-48	248	10	21	5	10	20	42
49-60	288	12	24	6	12	24	48

Nominal Rope Diameter	Diameter tolerance		Outer wire Diameter	Metric unit.								Imperial unit.						
	min.	max.		Unit weight	MBL				Unit weight	MBL								
					1770 Grade	1960 Grade	2160 Grade	1770 Grade		1960 Grade	2160 Grade							
mm	inches	mm	mm	mm	kg/m	kN	t(M)	kN	t(M)	kN	t(M)	lb/ft	lbf	t(S)	lbf	t(S)	lbf	t(S)
8		8.16	8.32	0.50	0.288	52.10	5.31	57.70	5.88	60.6	6.18	0.194	11,695	5.86	12,953	6.49	13,604	6.81
9		9.18	9.36	0.57	0.364	66.00	6.73	73.00	7.44	76.7	7.82	0.245	14,816	7.42	16,387	8.21	17,218	8.62
10		10.20	10.40	0.63	0.450	81.50	8.31	90.10	9.19	94.7	9.66	0.302	18,295	9.16	20,226	10.13	21,258	10.64
11		11.22	11.44	0.69	0.544	98.60	10.05	109.1	11.13	114.6	11.69	0.366	22,134	11.08	24,491	12.26	25,726	12.88
12		12.24	12.48	0.75	0.648	117.3	11.96	129.8	13.24	136.3	13.90	0.435	26,332	13.19	29,138	14.59	30,597	15.32
12.7	1/2	12.95	13.21	0.80	0.726	131.4	13.40	145.4	14.83	152.7	15.57	0.488	29,497	14.77	32,640	16.34	34,278	17.16
13		13.26	13.52	0.82	0.760	137.7	14.04	152.3	15.53	160.0	16.32	0.511	30,911	15.48	34,188	17.12	35,917	17.98
14		14.28	14.56	0.88	0.882	159.7	16.28	176.7	18.02	185.6	18.93	0.593	35,850	17.95	39,666	19.86	41,664	20.86
14.3	9/16	14.59	14.87	0.90	0.920	166.6	16.99	184.3	18.79	193.6	19.74	0.618	37,399	18.73	41,372	20.72	43,460	21.76
15		15.30	15.60	0.94	1.012	183.3	18.69	202.8	20.68	213.0	21.72	0.680	41,147	20.60	45,525	22.80	47,814	23.94
15.9	5/8	16.22	16.54	1.00	1.137	206.0	21.01	227.9	23.24	239.4	24.41	0.764	46,243	23.16	51,159	25.62	53,741	26.91
16		16.32	16.64	1.01	1.152	208.6	21.27	230.7	23.52	242.4	24.72	0.774	46,827	23.45	51,788	25.93	54,414	27.25
17		17.34	17.68	1.07	1.300	235.5	24.01	260.5	26.56	273.6	27.90	0.874	52,865	26.47	58,477	29.28	61,418	30.75
18		18.36	18.72	1.13	1.457	264.0	26.92	292.0	29.78	306.8	31.28	0.979	59,263	29.67	65,548	32.82	68,871	34.49
19		19.38	19.76	1.19	1.624	294.2	30.00	325.4	33.18	341.8	34.85	1.091	66,042	33.07	73,046	36.58	76,728	38.42
19.1	3/4	19.48	19.86	1.20	1.641	297.3	30.32	328.8	33.53	345.4	35.22	1.103	66,738	33.42	73,809	36.96	77,536	38.82
20		20.40	20.80	1.26	1.799	325.9	33.23	360.5	36.76	378.7	38.62	1.209	73,158	36.63	80,925	40.52	85,011	42.57
21		21.42	21.84	1.32	1.984	359.3	36.64	397.5	40.53	417.5	42.57	1.333	80,656	40.39	89,231	44.68	93,721	46.93
22		22.44	22.88	1.38	2.177	394.4	40.22	436.2	44.48	458.3	46.73	1.463	88,535	44.33	97,919	49.03	102,880	51.51
22.2	7/8	22.64	23.09	1.40	2.217	401.6	40.95	444.2	45.30	466.6	47.58	1.490	90,152	45.14	99,714	49.93	104,743	52.45
23		23.46	23.92	1.45	2.380	431.0	43.95	476.8	48.62	500.9	51.08	1.599	96,751	48.45	107,032	53.59	112,442	56.30
24		24.48	24.96	1.51	2.591	469.3	47.86	519.1	52.93	545.4	55.62	1.741	105,349	52.75	116,528	58.35	122,432	61.31
25		25.50	26.00	1.57	2.812	509.3	51.93	563.3	57.44	591.8	60.35	1.890	114,328	57.25	126,450	63.32	132,848	66.52
25.4	1	25.91	26.42	1.60	2.902	525.7	53.61	581.5	59.30	610.8	62.28	1.950	118,010	59.09	130,536	65.36	137,113	68.66
26		26.52	27.04	1.63	3.041	550.8	56.17	609.3	62.13	640.0	65.26	2.043	123,644	61.91	136,776	68.49	143,668	71.94
27		27.54	28.08	1.70	3.279	594.0	60.57	657.0	67.00	690.2	70.38	2.203	133,342	66.77	147,484	73.85	154,937	77.58
28		28.56	29.12	1.76	3.527	638.8	65.14	706.6	72.05	742.3	75.69	2.370	143,398	71.80	158,618	79.42	166,632	83.44
28.6	1-1/8	29.17	29.74	1.80	3.680	666.5	67.96	737.2	75.17	774.5	78.98	2.473	149,617	74.92	165,487	82.86	173,860	87.06
29		29.58	30.16	1.82	3.783	685.3	69.88	758.0	77.29	796.3	81.20	2.542	153,837	77.03	170,157	85.20	178,754	89.51
30		30.60	31.20	1.89	4.049	733.4	74.79	811.1	82.71	852.1	86.89	2.721	164,634	82.44	182,076	91.17	191,280	95.78
31		31.62	32.24	1.95	4.323	783.1	79.85	866.1	88.32	909.9	92.78	2.905	175,791	88.02	194,423	97.35	204,255	102.3
31.8	1-1/4	32.44	33.07	2.00	4.549	824.0	84.02	911.4	92.94	957.5	97.64	3.057	184,972	92.62	204,592	102.4	214,940	107.6
32		32.64	33.28	2.01	4.606	834.4	85.09	922.9	94.11	969.5	98.86	3.095	187,307	93.79	207,173	103.7	217,634	109.0
33		33.66	34.32	2.07	4.899	887.4	90.49	981.5	100.1	1031	105.1	3.292	199,204	99.75	220,328	110.3	231,440	115.9
34		34.68	35.36	2.14	5.200	941.9	96.05	1042	106.3	1095	111.7	3.494	211,439	105.9	233,909	117.1	245,807	123.1
34.9	1-3/8	35.60	36.30	2.19	5.479	992.5	101.2	1098	112.0	1153	117.6	3.682	222,797	111.6	246,480	123.4	258,826	129.6
35		35.70	36.40	2.20	5.511	998.2	101.8	1104	112.6	1160	118.3	3.703	224,077	112.2	247,827	124.1	260,398	130.4
36		36.72	37.44	2.26	5.830	1056	107.7	1168	119.1	1227	125.1	3.918	237,052	118.7	262,194	131.3	275,438	137.9
38		38.76	39.52	2.39	6.496	1177	120.0	1301	132.7	1367	139.4	4.365	264,214	132.3	292,050	146.2	306,865	153.7
38.1	1-1/2	38.86	39.62	2.39	6.530	1183	120.6	1308	133.4	1374	140.1	4.388	265,561	133.0	293,621	147.0	308,437	154.4
40		40.80	41.60	2.51	7.198	1304	133.0	1442	147.0	1515	154.5	4.837	292,723	146.6	323,701	162.1	340,089	170.3
41.3	1-5/8	42.13	42.95	2.60	7.673	1390	141.7	1537	156.7	1615	164.7	5.156	312,028	156.2	345,027	172.8	362,537	181.5
42		42.84	43.68	2.64	7.935	1437	146.5	1590	162.1	1670	170.3	5.332	322,579	161.5	356,925	178.7	374,883	187.7
44		44.88	45.76	2.38	8.709	1578	160.9	1745	177.9	1833	186.9	5.852	354,231	177.4	391,719	196.1	411,473	206.0
44.5	1-3/4	45.39	46.28	2.40	8.908	1614	164.6	1785	182.0	1875	191.2	5.986	362,312	181.4	400,698	200.6	420,902	210.8
45		45.90	46.80	2.43	9.109	1650	168.3	1825	186.1	1917	195.5	6.121	370,393	185.5	409,678	205.1	430,330	215.5
46		46.92	47.84	2.48	9.519	1724	175.8	1907	194.5	2003	204.2	6.396	387,005	193.8	428,085	214.4	449,635	225.1
47.6	1-7/8	48.55	49.50	2.57	10.19	1846	188.2	2042	208.2	2145	218.7	6.849	414,392	207.5	458,390	229.5	481,512	241.1
48		48.96	49.92	2.59	10.36	1877	191.4	2077	211.8	2181	222.4	6.964	421,351	211.0	466,247	233.5	489,593	245.2
50		51.00	52.00	2.35	11.25	2037	207.7	2253	229.7	2367	241.4	7.557	457,268	229.0	505,755	253.2	531,346	266.1
50.8	2	51.82	52.83	2.39	11.61	2103	214.4	2326	237.2	2443	249.1	7.801	472,083	236.4	522,143	261.5	548,407	274.6
52		53.04	54.08	2.45	12.16	2203	224.6	2437	248.5	2560	261.0	8.174	494,531	247.6	547,060	273.9	574,671	287.8
54	2-1/8	55.08	56.16	2.54	13.12	2376	242.3	2628	268.0	2761	281.5	8.814	533,367	267.1	589,936	295.4	619,792	310.3
56		57.12	58.24	2.64	14.11	2555	260.5	2826	288.2			9.479	573,549	287.2	634,383	317.7		
57.2	2-1/4	58.34	59.49	2.69	14.72	2666	271.9	2949	300.7			9.890	598,466	299.7	661,994	331.5		
58		59.16	60.32	2.73	15.13	2741	279.5	3032	309.2			10.17	615,302	308.1	680,626	340.8		
60		61.20	62.40	2.82	16.19	2933	299.1	3245	330.9			10.88	658,402	329.7	728,441	364.8		